

System Requirement

- 1GHz or higher-frequency CPU
- 1GB or larger memory
- Hard disk with 2GB or larger free space
- USB 2.0/3.0

Supported Operating System

- Microsoft Windows Vista
- Microsoft Windows 7
- Microsoft Windows 8
- Microsoft Windows 10

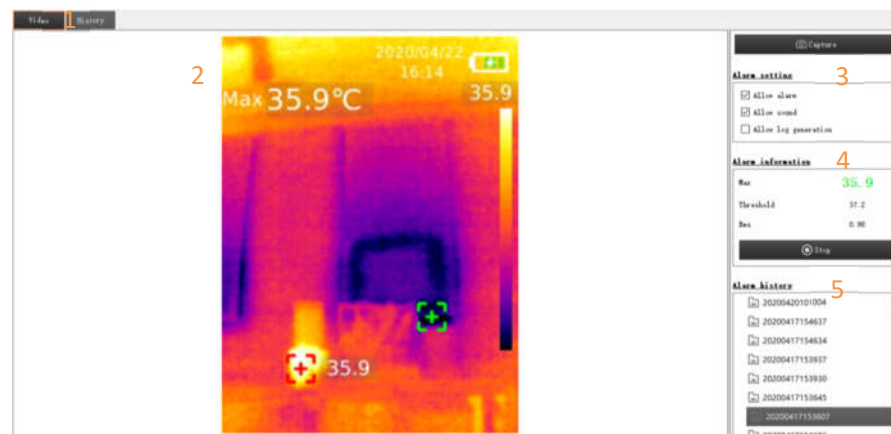
Please update the system in advance if your system is lower than the aforementioned versions.

Operation

Two modes of the device, video mode and USB mode, can be automatic identified by PC software.

Video Mode

1. Interfaces and Basic Functions

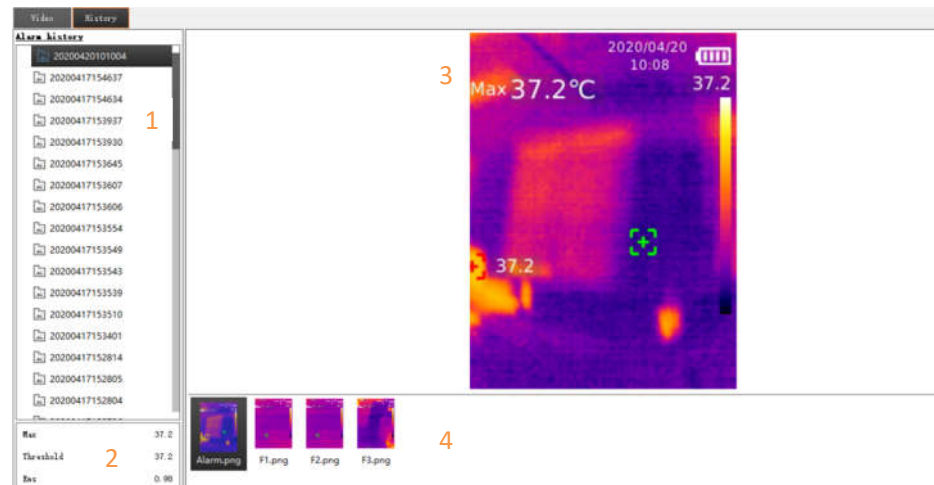


Zone	Description
1	Real-time video or alarm history
2	Real-time video
3	Alarm setting
4	Alarm information
5	Alarm history list

Full-screen mode

- Double click zone 2 to enter full-screen mode
- Double click zone 2 or press ESC button to exit full-screen mode.

2. Alarm History Review



Zone	Description
1	Alarm history list
2	Alarm information
3	Alarm photos
4	Alarm photo list (F/L represents pre/post-alarm photos)

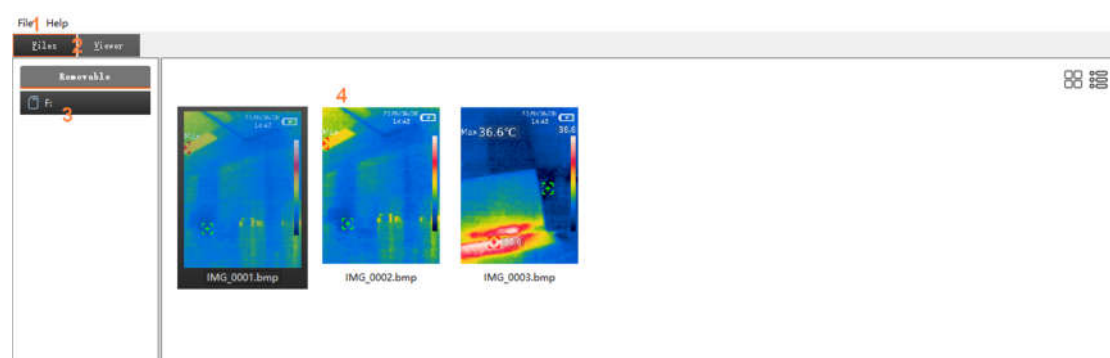
3. Alarm Function

When the maximum temperature exceeds or equals to the alarm threshold:






- Maximum temperature will be displayed in color of warning if the alarm is allowed.
- Sound alarm will be enabled if sound alarm is allowed.
- Alarm history files will be automatically generated if log generation is allowed. 1 alarming photo, 3 pre-alarm photos and 3 post-alarm photos will be stored if the condition is met.

USB Mode

1. Interfaces and Basic Functions







Zone	Description
1	Menu
2	Photo list or photo information

-  This is to select existing graphics, which will be displayed by dotted lines.
-  \    This is to select the shape of graphics between point, line, rectangle and circle, and the data of drawing graphics will be recorded on the right.

Temperature information

Name	Type	High	Low	Avg
S1	Dot	24.7	24.7	24.7
S2	Dot	25.0	25.0	25.0
S3	Circle	25.2	24.5	24.8
S4	Line	25.0	24.7	24.8

-  This is to select the colors of graphics.
-  This is to cancel selected graphics.
-  This is to delete all the graphics.
-  This is to export images files.

4. Others

- The temperature of cursor's pixels will be displayed on the lower right corner.

X:220 Y:030 26.2°C

-  This is to set the unit of temperature.